



## Kevelioc Road, London, N17 7PR

£465,000



Cole Harding present this lovely two bedroom Victorian terrace house located in the sort after area of Tower Gardens in Tottenham. The property boast Living room with bay windows, large kitchen diner that leads to a west facing garden, upstairs bathroom two double bedrooms and stairs to a loft room (storage).

The property is close to lordship recreation grounds, Bruce Grove, tower Gardens and Down Hills park. The property is has good local schools and easy access to either Bruce Grove over Ground or Turnpike Lane tube station.

The house has benefitted from Double Glazing, (wooden at front due to conservation area) a full rewire and a combi boiler installed. Also a loft space which was converted to an office during the pandemic.

We also have Downhills Park, Bruce Castle Park within a 10 minute walk, Alexandra Palace Park and Walthamstow wetlands a quick bus ride up the road.

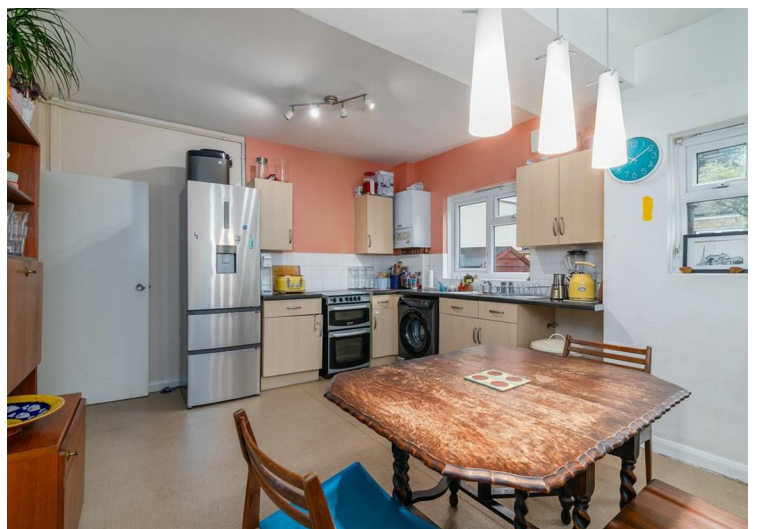
A great selection of ofsted rated "outstanding" "good" Primary and secondary schools all within easy travelling distance. Also a great selection of childcare facilities and very good nursery's.

- Two Double Bedrooms
- Seperate Reception room
- Kitchen Diner
- Upstairs bathroom
- Low maintenance private rear garden
- Close to Tower Gardens & Lordship rec Park
- Easy access to Turnpike Lane & Wood Green Tube station
- Excellent bus links & Bruce Grove over ground train
- Excellent schools
- Loft space

### Viewing

To arrange a viewing on this property or require further information please contact one of our team on 0208 059 4444



A modern living room with light pink walls. On the left, a large window is covered with light green curtains. A blue sofa is positioned in front of the window, adorned with several pillows, including a large teal one and a black one with a white graphic. A floor lamp with three white globe shades stands next to the sofa. In the center, a white door is open, revealing a doorway with a pink frame. To the right, a large black television sits on a long, low wooden cabinet. A small potted plant is placed next to the TV. In the foreground, a light-colored wooden coffee table holds a remote control and some papers. A patterned rug is on the floor.

**T. 0208 059 4444 | E. [info@coleharding.co.uk](mailto:info@coleharding.co.uk)**